

St. Edward's Primary School

VISION STATEMENTS



For Teaching and Learning

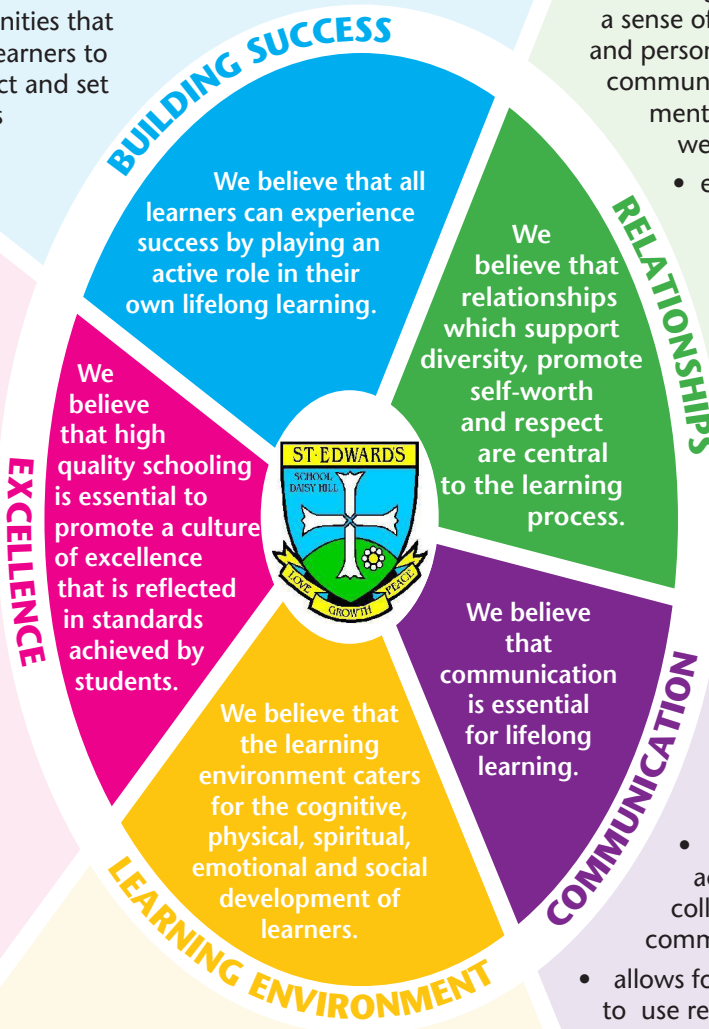
Effective teaching and learning

- fosters a collaborative learning environment, catering for different learning styles
 - creates opportunities that encourage learners to self-reflect and set goals

- forms positive and supportive partnerships with all stakeholders
- recognises and celebrates success

Effective teaching and learning

- requires deep knowledge, understanding, skills and values that enable advanced learning
- delivers curriculum with breadth, balance and depth
- provides assessment that is rigorous and comprehensive
- uses reliable, rich data to improve student outcomes
- promotes excellence through informed pedagogy
- uses purposeful, personalised and meaningful learning to allow students to reach their potential
- encourages creativity by promoting individuals to become innovative and proficient problem solvers
 - models high quality standards



Effective teaching and learning

- respects the diversity of experience of each individual and values each community member
- acknowledges tolerance and acceptance, appreciation and personalised learning for a diverse range of learners and learning styles
- instils and fosters through positive, affirming and supportive relationships, a sense of self-worth, self-awareness and personal identity to enable all in the community to manage their emotional, mental, spiritual and physical wellbeing
 - encourages respect through healthy relationships, accepting and celebrating the diversity of all community members.
 - provides a collaborative environment that fosters teacher – student and student – student engagement.
 - fosters students' rights to feel safe, valued and included
 - encourages positive attitudes to learning, self and others as learners.

Effective teaching and learning

- develops effective communicators
- enables students to plan activities independently, collaborate, work in teams and communicate ideas
 - allows for effective communicators to use real world experiences, including contemporary technology

Effective teaching and learning

- requires a physical environment that is conducive to learning
- provides the opportunity for inclusive learning
 - reflects informed classroom practices, supported with appropriate resources



Love Growth and Peace